

**COREL™**

***WordPerfect®***  
*Office 2002*)

Moving between Microsoft® Word and WordPerfect®, and Microsoft® Excel and Quattro Pro®

Product specifications, pricing, packaging, technical support and information (“Specifications”) refer to the United States retail English version only. The United States retail version is available only within North America and is not for export. Specifications for all other versions (including language versions and versions available outside of North America) may vary.

INFORMATION IS PROVIDED BY COREL ON AN “AS IS” BASIS, WITHOUT ANY OTHER WARRANTIES OR CONDITIONS, EXPRESS OR IMPLIED, INCLUDING, BUT NOT LIMITED TO, WARRANTIES OF MERCHANTABILITY, SATISFACTORY QUALITY, MERCHANTABILITY OR FITNESS FOR A PARTICULAR PURPOSE, OR THOSE ARISING BY LAW, STATUTE, USAGE OF TRADE, COURSE OF DEALING OR OTHERWISE. THE ENTIRE RISK AS TO THE RESULTS OF THE INFORMATION PROVIDED OR ITS USE IS ASSUMED BY YOU. COREL SHALL HAVE NO LIABILITY TO YOU OR ANY OTHER PERSON OR ENTITY FOR ANY INDIRECT, INCIDENTAL, SPECIAL, OR CONSEQUENTIAL DAMAGES WHATSOEVER, INCLUDING, BUT NOT LIMITED TO, LOSS OF REVENUE OR PROFIT, LOST OR DAMAGED DATA OR OTHER COMMERCIAL OR ECONOMIC LOSS, EVEN IF COREL HAS BEEN ADVISED OF THE POSSIBILITY OF SUCH DAMAGES, OR THEY ARE FORESEEABLE. COREL IS ALSO NOT LIABLE FOR ANY CLAIMS MADE BY ANY THIRD PARTY. COREL’S MAXIMUM AGGREGATE LIABILITY TO YOU SHALL NOT EXCEED THE COSTS PAID BY YOU TO PURCHASE THE MATERIALS. SOME STATES/COUNTRIES DO NOT ALLOW EXCLUSIONS OR LIMITATIONS OF LIABILITY FOR CONSEQUENTIAL OR INCIDENTAL DAMAGES, SO THE ABOVE LIMITATIONS MAY NOT APPLY TO YOU.

© 2002 Corel Corporation. All rights reserved.

Corel, Grammar As-You-Go, Quattro Pro, QuickCorrect, QuickWords, QuickFinder, SpeedFormat, Spell-As-You-Go, TextArt, WordPerfect, and the Corel logo are trademarks or registered trademarks of Corel Corporation and/or its subsidiaries in Canada, the United States, and/or other countries. Grammatik is a registered trademark of Novell, Inc. Microsoft, MS-DOS, Visual Basic, and Windows are registered trademarks of Microsoft Corporation in the United States and/or other countries. Other product, font and company names and logos may be trademarks or registered trademarks of their respective companies.

THIS COMPARISON IS FOR RELEASE IN NORTH AMERICA ONLY. DO NOT COPY OR DISTRIBUTE OUTSIDE NORTH AMERICA.

References to Microsoft Word and Microsoft Excel are to the latest version of Microsoft Office 2000 as of September 18, 2002. The information on Microsoft Word and Microsoft Excel contained herein has been derived from the application and its online help. Product specifications, pricing, packaging, technical support and information (“Specifications”) refer to the United States retail English version only. The United States retail English version is available only within North America and is not for export. Specifications for all other versions (including language versions and version available outside North America) may vary. All Specifications, claims, features, representations and/or comparisons provided are correct to Corel’s best knowledge at the date of publication, September 18, 2002. However, because the software programs referred to herein are complex and may be upgraded from time to time, some descriptions may become inaccurate. We recommend that you do not rely solely on this document in evaluating these programs, but that you carefully review the current Specifications of each product to weigh the features and benefits that apply to a particular task. If you know of any inaccuracy within this document, please write to Corel Corporation, WordPerfect Product Management team, 1600 Carling Ave., Ottawa, ON K1Z 8R7.

# Contents

<b>Introduction.</b>	<b>5</b>
<b>Moving Between Microsoft Word and WordPerfect</b>	<b>6</b>
Opening Microsoft Word documents	6
Saving WordPerfect documents as Microsoft Word documents.	7
Enabling the Microsoft Word menu bar.	7
Using Microsoft Word shortcut keys in WordPerfect	7
Comparing Microsoft Word and WordPerfect features	9
Customizing WordPerfect	11
Publishing to PDF in WordPerfect	12
<b>Moving Between Microsoft Excel and Quattro Pro.</b>	<b>14</b>
Opening Microsoft Excel documents	14
Saving Quattro Pro documents as Microsoft Excel documents.	14
Enabling Microsoft Excel menus and tabs in Quattro Pro.	15
Microsoft Excel analysis tools not imported by Quattro Pro.	16
Microsoft Excel cell attributes and styles imported by Quattro Pro	16
Microsoft Excel formulas and functions imported by Quattro Pro	17
Microsoft Excel functions not supported by Quattro Pro	17
Microsoft Excel functions supported by Quattro Pro	18
Microsoft Excel print options, windows, and charts imported by Quattro Pro.	21
Microsoft Excel spreadsheet data imported by Quattro Pro	22
Spreadsheet objects transferred between Microsoft Excel and Quattro Pro	23
<b>Corel Corporate Profile.</b>	<b>25</b>

## Introduction

This document is designed to help users make the transition from Microsoft® Word and Microsoft® Excel to WordPerfect® 10 and Quattro Pro® 10. The document uses comparative tables to illustrate key differences between the applications, and also provides basic procedures to help smooth your transition.

WordPerfect and Quattro Pro have been designed to be as compatible as possible with Microsoft Word and Microsoft Excel. You can open, import, export, and save Microsoft Word and Microsoft Excel files easily, reducing or eliminating many of the difficulties that can arise when switching applications.

# Moving Between Microsoft® Word and WordPerfect®

WordPerfect 10 makes it easy for you to convert Microsoft Word files to WordPerfect format, open Microsoft Word documents in WordPerfect, and save WordPerfect documents as Microsoft Word files. If you are moving from Microsoft Word, you need to know which features of WordPerfect have different names. Because Microsoft Word and WordPerfect share basic formatting features, essential layouts, and many of the same menu options, you can create Microsoft Word documents and then easily import files into WordPerfect.

## Opening Microsoft® Word documents

You can open the following Microsoft Word file formats in WordPerfect:

- Microsoft Word 1.0 for MS-DOS®
- Microsoft Word 1.1 for MS-DOS
- Microsoft Word 1.2 for MS-DOS
- Microsoft Word 2.0 for MS-DOS
- Microsoft Word 4.0 for MS-DOS
- Microsoft Word 5.0 for MS-DOS
- Microsoft Word 5.5 for MS-DOS
- Microsoft Word 6.0 for Windows®
- Microsoft Word 7.0 (Microsoft® Office 95)
- Microsoft Word 97
- Microsoft Word 2000
- Microsoft Word 2002 (Microsoft Office XP)

### To open a Microsoft Word document

- 1 Click **File** ► **Open**.
- 2 Choose the drive and folder where the file is stored.
- 3 Click a filename.
- 4 Click **Open**.

### To insert a Microsoft Word document into a WordPerfect file

- 1 Click **Insert** ► **File**.

- 2 Choose the drive and folder where the file is stored.
- 3 Click a filename.
- 4 Click **Insert**.

## Saving WordPerfect® documents as Microsoft® Word documents

You can save WordPerfect documents as Microsoft Word documents. This ensures that your WordPerfect files will transfer virtually seamlessly to different versions of Microsoft Word.

### To save a WordPerfect document as a Microsoft Word document

- 1 Click **File ► Save as**.
- 2 Choose the drive and the folder where you want to save the file.
- 3 Type the filename in the **Filename** list box.
- 4 Choose a version of Microsoft Word from the **File type** list box.
- 5 Click **Save**.

## Enabling the Microsoft® Word menu bar

WordPerfect gives you the option to change the user interface (UI) to include the Microsoft Word menu bar.

### To enable the Microsoft Word menu bar

- 1 Click **View ► Toolbars**.
- 2 Enable the **Microsoft Word 97** check box.

## Using Microsoft® Word shortcut keys in WordPerfect®

The following table lists the Microsoft Word shortcut keys and the WordPerfect keyboard equivalents. You can customize your shortcut keys to reflect Microsoft Word or WordPerfect settings.

Microsoft® Word shortcut keys	WordPerfect® command	WordPerfect® 10 shortcut keys
Ctrl + E	Align center	Shift + F7
Ctrl + B	Bold, turn on/turn off	Ctrl + B
Ctrl + F4	Close document	Ctrl + F4
Ctrl + C	Copy the selection to the Clipboard	Ctrl + C
Alt + F4	Exit	Alt + F4
Ctrl + D	Font, change	F9

<b>Microsoft® Word shortcut keys</b>	<b>WordPerfect® command</b>	<b>WordPerfect® 10 shortcut keys</b>
F7	Grammar, check and correct	Alt + Shift + F1
Ctrl + Enter	Hard page break	Ctrl + Enter
Enter	Hard return	Enter
F1	Help	F1
Ctrl + Hyphen	Hyphen, hard	Ctrl + Hyphen
Ctrl + Shift + Hyphen	Hyphen, soft	Ctrl + Shift + Hyphen
Ctrl + M	Indent current paragraph one tab stop	F7
Ctrl + I	Italic, turn on/turn off	Ctrl+ I
Ctrl + V	Insert Clipboard contents at the cursor	Ctrl + V
Ctrl + G	Jump to a specified place in the document	Ctrl + G
Ctrl + E	Justify center	Ctrl + E
Ctrl + J	Justify full	Ctrl + J
Ctrl + L	Justify left	Ctrl + L
Ctrl + R	Justify right	Ctrl + R
Shift + Enter	Line break	Ctrl + Shift + L
Ctrl + T	Margin release (hanging indent)	Ctrl + F7
Ctrl + Home	Move the cursor to the beginning of the document	Ctrl + Home
Home	Move the cursor to the beginning of a line	Home
Page down	Move the cursor to the bottom of the screen	Page down
Up Arrow	Move one cell up in a table	Alt + Up Arrow
Down Arrow	Move one cell down in a table	Alt + Down Arrow
Right Arrow or Tab	Move one cell right in a table	Alt + (Right Arrow or Tab)
Left Arrow or Tab	Move one cell left in a table	Alt + (Left Arrow or Tab)
Right Arrow	Move one column to the right	Alt + Right Arrow

Microsoft® Word shortcut keys	WordPerfect® command	WordPerfect® 10 shortcut keys
Left Arrow	Move one column to the left	Alt + Left Arrow
Ctrl + X	Move selection to the Clipboard	Ctrl + X
Ctrl + N	New document	Ctrl + Shift + N
Ctrl + Enter	New page	Ctrl + Enter
Ctrl + O	Open document	Ctrl + O
Ctrl + P	Print	Ctrl + P
Ctrl + S	Save	Ctrl + S
F12	Save as	F3
Ctrl + F	Search (forward)	Ctrl + F
Ctrl + Shift + F	Search (backward)	Ctrl + Shift + F
F7	Spelling, check and correct	Ctrl + F1
Shift + F7	Open thesaurus	ALT + F1
Ctrl + U	Underline, turn on/turn off	Ctrl + U
Insert	Typeover	Insert
Ctrl + Z	Undo	Ctrl + Z
Ctrl + Y	Undo reverse last	Ctrl + Shift + Z

## Comparing Microsoft® Word and WordPerfect® features

The following table lists the features in Microsoft Word that have different names in WordPerfect.

Microsoft® Word feature	WordPerfect® 10 feature
Annotation	Comment
AutoCorrect	QuickCorrect™
AutoShapes	Shapes
AutoText	QuickWords™
Automatic save	Backup
Break	New page
Bullets and numbers	Bulleted, numbered, and alphabetical lists
Change case	Convert case
Character	Font appearance

<b>Microsoft® Word feature</b>	<b>WordPerfect® 10 feature</b>
Charting	Chart
Compare versions	Document review
Create envelope	Envelopes
Customize	Settings
Drawing	Draw
Find file	QuickFinder™
Footers	Headers/footers
Frame	Graphics
Full screen	Hide bars
Grammar	Grammatik®
Grammar as you type	Grammar As-You-Go™
Headers	Headers/footers
Indentation	Indent
Index and tables	Reference
Keep lines together	Keep text together
Keep with next	Conditional end of page
Merge documents or Mail merge	Merge
Merge cells	Join
Options	Settings
Page alignment	Center page
Paragraph alignment	Justification
Protect document	Keep text together
Right-aligned text	Flush right
Sorting	Sort
Spelling	Spelling checker
Spelling as you type	Spell-As-You-Go™
Summary info	Document summary
Table AutoFormat	SpeedFormat™
Tabs	Tab set
Text direction	Rotate text
Track changes	Document review
Vertical alignment	Center page
WordArt	TextArt®

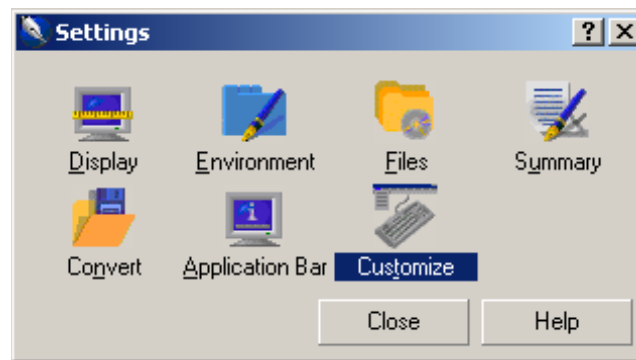
Microsoft® Word feature	WordPerfect® 10 feature
Word count	Properties

## Customizing WordPerfect®

One of the key strengths of WordPerfect is its ease of customization. You can customize virtually any element of WordPerfect to ensure that it fits your working style and needs.

### To customize WordPerfect 10

- 1 Click **Tools** ► **Settings**.
- 2 Choose an element to be customized from the **Settings** dialog box.

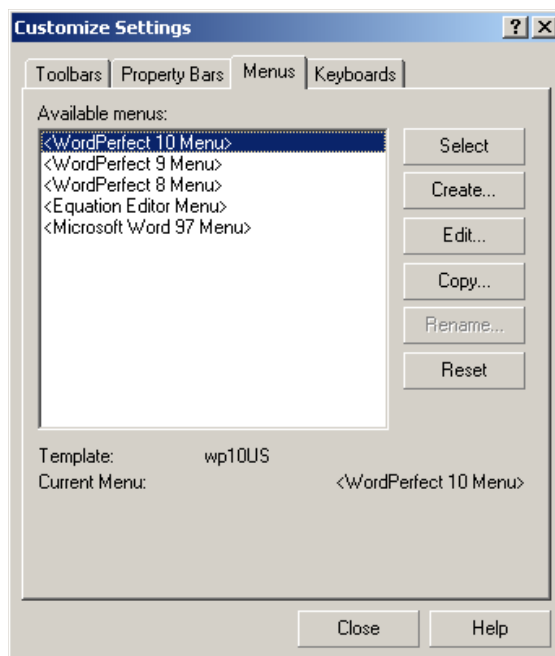


WordPerfect 10 gives you a wide variety of customization choices.

**To customize toolbars, property bars, menus, or keyboards**

1 Click **Tools ► Settings ► Customize**.

2 Choose an element to be customized from the dialog box that appears.



The customization dialog box lets you determine your own working style.

**Publishing to PDF in WordPerfect®**

WordPerfect features an integrated engine that lets you publish a document to Portable Document Format (PDF) so that it can be distributed across multiple platforms and read by virtually anyone. You can choose common PDF styles and compression methods, add bookmarks, and more.

**To publish the active document to PDF**

1 Click **File ► Publish to PDF**.

2 Click the **General** tab.

3 Choose **Browse** from the **Filename** list box.

4 Choose the drive and folder where you want to save the file.

5 Type the filename in the **Filename** box.

6 Click **Save**.

7 In the **Export range** area, enable one or more of the following options:

- **Full document** — publishes the entire file
- **Current page** — publishes the active page only
- **Pages** — publishes a portion of the file
- **Selection** — publishes selected text

8 Choose a style from the **PDF style** list box.

9 Click **OK**.

# Moving Between Microsoft<sup>®</sup> Excel and Quattro Pro<sup>®</sup>

You can open Microsoft Excel workbooks in Quattro Pro without truncating data. Quattro Pro supports many of the features of Microsoft Excel and translates most Microsoft Excel formats, navigational tools, print options, formulas, and spreadsheet functions.

Occasionally, some information in a workbook cannot be imported or exported or may not display in the same way after the conversion process.

## Opening Microsoft<sup>®</sup> Excel documents

You can open Microsoft Excel version 3, 5, 7, and 97 workbooks in Quattro Pro. If you modify the workbook, you can save it as a Quattro Pro notebook so that you don't lose Quattro Pro formulas or features not supported in Microsoft Excel.

Microsoft Excel workbooks that contain custom spreadsheet names may not open in Quattro Pro if characters used in the names are not recognized by Quattro Pro. If this happens, Quattro Pro displays a dialog box warning you about the invalid spreadsheet name. You can change the spreadsheet name to make it compatible with Quattro Pro.

### To open a Microsoft Excel workbook in Quattro Pro

- 1 Click **File** ► **Open**.
- 2 Choose the drive and folder where the workbook is stored.
- 3 Double-click the workbook's filename.

## Saving Quattro Pro<sup>®</sup> documents as Microsoft<sup>®</sup> Excel documents

You can save a Quattro Pro notebook as a Microsoft Excel file; however, some file format features unique to Quattro Pro may be lost.

### To save a Quattro Pro notebook as a Microsoft Excel file

- 1 Click **File** ► **Save as**.
- 2 Choose the drive and folder where you want to save the file.
- 3 Type a filename in the **Filename** box.
- 4 Choose a Microsoft Excel file type from the **File type** list box.

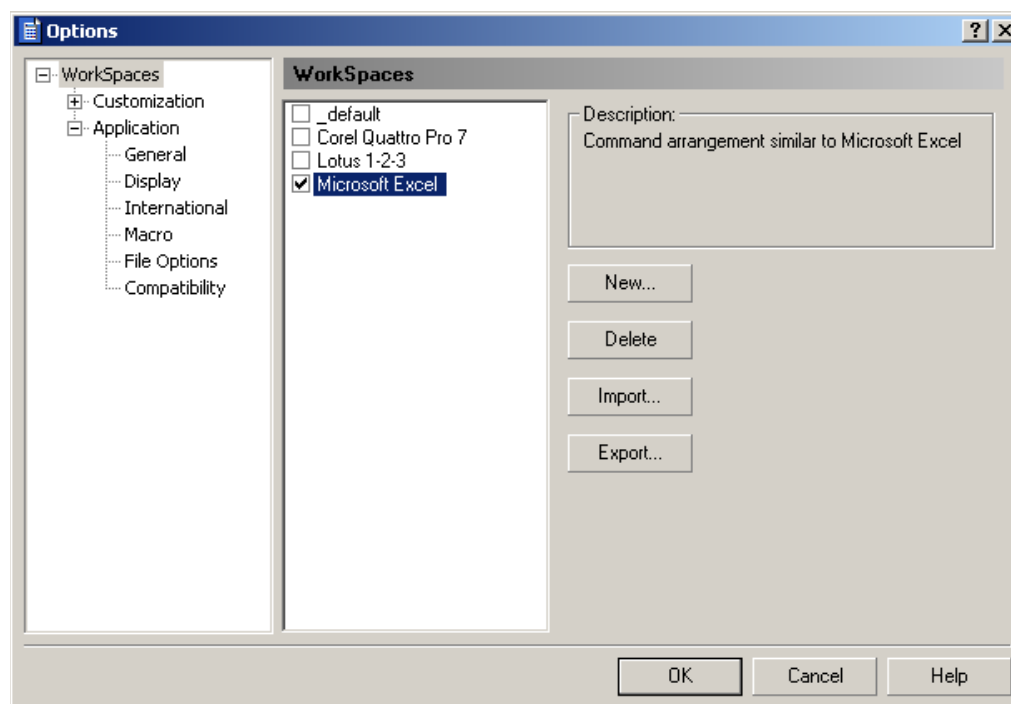
## Enabling Microsoft® Excel menus and tabs in Quattro Pro®

You can use Microsoft Excel 97 menus and tabs in Quattro Pro. This lets you work in a familiar environment until you are accustomed to the Quattro Pro menu structure.

You can change spreadsheet tabs in a Quattro Pro notebook to adopt the Microsoft Excel 97 spreadsheet naming conventions.

### To use Microsoft Excel 97 menus and tabs in Quattro Pro

- 1 Click **Tools** ► **Settings**.
- 2 Click **Workspaces**.
- 3 Enable the **Microsoft Excel** check box in the **Workspaces** list.



### To switch to the Microsoft Excel naming convention for spreadsheet tabs

- 1 Click **Tools** ► **Settings**.
- 2 In the list of categories, double-click **Workspace**, **Application**, and click **Compatibility**.
- 3 In the **Sheet tab display** area, enable the **Display as numbers** check box.

## **Microsoft® Excel analysis tools not imported by Quattro Pro®**

Quattro Pro cannot import the following Microsoft Excel analysis tools:

**Scenario Manager data** — data is ignored in Quattro Pro

**Solve information** — information is not imported to Quattro Pro Optimizer

## **Microsoft® Excel cell attributes and styles imported by Quattro Pro®**

When you open a Microsoft Excel file in Quattro Pro, most cell properties, styles, and named blocks are imported and translated automatically.

### **Cell properties and styles**

Styles are imported from and exported to Microsoft Excel files. When importing files to Quattro Pro, the style names and formatting are translated into Quattro Pro styles. The formatting includes the following cell attributes:

- font (style, size, bold, italic, underline, color)
- line drawing (single, double, thick, color)
- cell width
- numeric format (transfers to the most closely resembled format)
- row heights (can be imported into Quattro Pro, but cannot be exported into Microsoft Excel)

### **Named blocks**

Quattro Pro imports Microsoft Excel named ranges, including 2D and 3D ranges. Quattro Pro also exports its named 2D and 3D ranges into Microsoft Excel spreadsheets.

### **Shrink to fit**

The Microsoft Excel Shrink to fit feature is not supported by Quattro Pro.

### **Currency formats**

Not all Microsoft Excel currency formats are supported by Quattro Pro; conversely, not all Quattro Pro currency formats are supported by Microsoft Excel.

## Microsoft® Excel formulas and functions imported by Quattro Pro®

Quattro Pro maps as many Microsoft Excel formulas to spreadsheet functions as possible when it opens a Microsoft Excel file. Those without a Quattro Pro equivalent are translated as values, and the background color of the cell changes to red. When you save a file in a Microsoft Excel format, Quattro Pro translates spreadsheet functions to the nearest equivalent Microsoft Excel function.

### Array formulas

Array formulas are not imported.

### Hidden formulas

When importing Microsoft Excel files, Quattro Pro converts Microsoft Excel hidden formulas to a protected cell with the format hidden. Quattro Pro does not, however, export hidden formulas.

### User-defined functions

When Quattro Pro opens Microsoft Excel spreadsheets containing user-defined functions, they are converted to values, and the cells are shaded red. Quattro Pro does not export user-defined functions.

## Microsoft® Excel functions not supported by Quattro Pro®

The following Microsoft Excel functions are not supported by Quattro Pro. Only the values are imported, and the cells are shaded red to indicate that the formula was not imported.

AMORDEGRC	DEC2HEX	HEX2DEC	OCT2HEX
AMORLINC	DEC2OCT	HEX2OCT	SEARCH
AREAS	DGET	HLOOKUP	SUMPRODU CT
BIN2DEC	DPRODUCT	INFO	TEXT
BIN2HEX	EDATE	ISBLANK	VLOOKUP
BIN2OCT	ERROR.TYPE	ISREF	
COMBIN	FORECAST	LOOKUP	
DCOUNT	FVSCHEDULE	OCT2BIN	
DEC2BIN	HEX2BIN	OCT2DEC	

**Microsoft® Excel functions supported by Quattro Pro®**

Quattro Pro imports the following Microsoft Excel spreadsheet functions.

	CHIDIST	COVAR	DURATION
	CHIINV	CRITBINOM	DVAR
	CHITEST	CUMIPMT	DVARP
ABS	CHOOSE	CUMPRINC	EFFECT
ACCRINT	CLEAN	DATE	EOMONTH
ACCRINTM	CODE	DATEVALUE	ERF
ACOS	COLUMN	DAVERAGE	ERFC
ACOSH	COLUMNS	DAY	EVEN
ADDRESS	COMPLEX	DAYS360	EXACT
AND	CONCATENATE	DB	EXP
ASIN	CONFIDENCE	DCOUNTA	EXPONDIST
ASINH	CONVERT	DCOUNT	FACT
ATAN	CORREL	DDB	FACTDOUBLE
ATAN2	COS	DEGREES	FALSE
ATANH	COSH	DELTA	FDIST
AVERAGE	COUNT	DEVSQ	FIND
BESSELI	COUNTA	DISC	FINV
BESSELJ	COUNTIF	DMAX	FISHER
BESSELK	COUNTBLANK	DMIN	FISHERINV
BESSELY	COUPDAYBS	DOLLAR	FIXED
BETADIST	COUPDAYS	DOLLARDE	FLOOR
BETAINV	COUPDAYSNC	DOLLARFR	FREQUENCY
CEILING	COUPNCD	DSTDEV	FTEST
CELL	COUPNUM	DSTDEVP	FV
CHAR	COUPPCD	DSUM	GAMMADIST

GAMMAINV	IMSUB	LOG	NETWORKDAYS
GAMMALN	IMSUM	LOG10	NOMINAL
GCD	INDEX	LOGEST	NORMDIST
GEOMEAN	INDIRECT	LOGINV	NORMINV
GESTEP	INT	LOGNORMDIST	NORMSDIST
GROWTH	INTERCEPT	LOWER	NORMSINV
HARMEAN	INTRATE	MATCH	NOT
HOUR	IPMT	MAX	NOW
HYPGEOMDIST	IRR	MDETERM	NPER
IF	ISERR	MDURATION	NPV
IMABS	ISERROR	MEDIAN	ODD
IMAGINARY	ISEVEN	MID	ODDFPRICE
IMARGUMENT	ISLOGICAL	MIN	ODDFYIELD
IMCONJUGATE	ISNA	MINUTE	ODDLPRICE
IMCOS	ISNONTEXT	MINVERSE	ODDLYIELD
IMDIV	ISNUMBER	MIRR	OFFSET
IMEXP	ISODD	MMULT	OR
IMLN	ISTEXT	MOD	PEARSON
IMLOG10	KURT	MODE	PERCENTILE
IMLOG2	LARGE	MONTH	PERCENTRANK
IMPOWER	LCM	MROUND	PERMUT
IMPRODUCT	LEFT	MULTINOMIAL	PI
IMREAL	LEN	N	PMT
IMSIN	LINEST	NA	POISSON
IMSQRT	LN	NEGBINOMDIST	POWER

PPMT	RSQ	TAN	WORKDAY
PRICE	SECOND	TANH	XIRR
PRICEDISC	SIGN	TBILLEQ	XNPV
PRICEMAT	SIN	TBILLPRICE	YEAR
PROB	SINH	TBILLYIELD	YEARFRAC
PRODUCT	SKEW	TDIST	YIELD
PROPER	SLN	TIME	YELDDISC
PV	SLOPE	TIMEVALUE	YIELDMAT
QUARTILE	SMALL	TINV	ZTEST
QUOTIENT	SQRT	TODAY	
RADIANS	SQRTPI	TRANSPOSE	
RAND	STANDARDIZE	TREND	
RANDBETWEEN	STDEV	TRIM	
RANK	STDEVP	TRIMMEAN	
RATE	STEYX	TRUE	
RECEIVED	SUBSTITUTE	TRUNC	
REPLACE	SUBTOTAL	TTEST	
REPT	SUM	TYPE	
RIGHT	SUMIF	UPPER	
ROMAN	SUMSQ	VALUE	
ROUND	SUMX2MY2	VAR	
ROUNDDOWN	SUMX2PY2	VARP	
ROUNDUP	SUMXMY2	VDB	
ROW	SYD	WEIBULL	
ROWS	T	WEEKDAY	

## **Microsoft® Excel print options, windows, and charts imported by Quattro Pro®**

When you import Microsoft Excel files, most print options, window configurations, and charts translate seamlessly into Quattro Pro. When exporting a Quattro Pro notebook to a Microsoft Excel file, charts are converted to the nearest Microsoft Excel equivalent.

### **Print options**

The following print options are imported into Quattro Pro from Microsoft Excel files:

- orientation
- margins (top, left, right, bottom)
- header size (inches)
- footer size (inches)
- header text
- footer text
- print grid lines

### **Chart types**

Microsoft Excel charts that match Quattro Pro chart types convert; otherwise, Quattro Pro converts the Microsoft Excel chart to the Quattro Pro chart that it most closely resembles, adding properties where it can to make the chart look as much as possible like the Microsoft Excel chart. Bitmaps and textures added to Microsoft Excel charts do not convert. They become solid colors in Quattro Pro.

### **Microsoft Excel chart types not supported by Quattro Pro**

- stacked line chart and 100% stacked line chart
- bar of pie chart and pie of pie chart
- 100% stacked area chart and 3D 100% stacked area chart
- no direct support for color radar chart
- no direct support for contour chart
- no direct support for scatter chart
- no direct support for multiple-series donut chart

### **Microsoft Excel chart attributes not supported by Quattro Pro**

- fill settings for XY titles
- title — vertical alignment and orientation

- minor gridlines
- limited support for bar overlapping
- limited pattern support for axis or gridlines
- limited support for gradient fill styles
- limited support for legend positioning

#### **Microsoft® Excel 97 chart items possibly missing when converting to Quattro Pro®**

When opening Microsoft Excel 97 workbooks in Quattro Pro, embedded charts may display problems. The data is converted, but the following items may be missing from the chart:

- any lines, labels, or attributes related to the secondary y-axis
- both the primary and secondary y-axis scales

#### **Microsoft® Excel spreadsheet data imported by Quattro Pro®**

Quattro Pro reads Microsoft Excel version 3, 5, 7, and 97 workbook files and imports the following Microsoft Excel data:

- values and labels
- most cell formatting
- embedded charts
- links to different workbooks or files
- most functions
- arithmetic formulas
- chart spreadsheets (converted to floating graphs)
- OLE objects contained in Microsoft Excel spreadsheets

#### **Hyperlinks**

Hyperlinks saved in Microsoft Excel files do not work in Quattro Pro.

#### **Spreadsheet and file types**

Quattro Pro imports and exports only Microsoft Excel workbook files. In Microsoft Excel version 5 and later, this includes multiple-spreadsheet support. Quattro Pro does not recognize Microsoft Excel chart pages or macro pages, chart files (.xlc), templates (.xlt), add-ins (.xla, .xll), or toolbars (.xlb).

**Password protection**

Microsoft Excel password protection is not supported. Quattro Pro displays a warning if a user attempts to open a protected Microsoft Excel file.

**Microsoft® Visual Basic® for Applications**

Quattro Pro cannot read, write, or interpret Visual Basic for Applications (VBA) scripts written from within Microsoft Excel. Quattro Pro cannot translate its own VBA scripts into Microsoft Excel-compatible scripts.

**Microsoft® Excel macros**

Quattro Pro does not support Microsoft Excel macros.

**Microsoft® Excel functions**

Quattro Pro converts any Microsoft Excel function that it does not support to a value, and shades it red. Before converting a Microsoft Excel file to Quattro Pro, make sure no cells in the Microsoft Excel file are shaded red or contain red text.

If Quattro Pro does not understand any of the Microsoft Excel commands, the commands and any associated comments appear as comments in the converted file.

**Spreadsheet objects transferred between Microsoft® Excel and Quattro Pro®**

With some exceptions, OLE objects and other objects such as graphs can be transferred between Microsoft Excel and Quattro Pro.

**OLE 2.0 links and objects**

Quattro Pro loads OLE 2.0 links embedded in a Microsoft Excel file. However, Quattro Pro does not export OLE 2.0 links when saving to a Microsoft Excel format.

Quattro Pro imports OLE 2.0 objects embedded in Microsoft Excel spreadsheets. However, Quattro Pro does not export OLE 2.0 objects when saving to a Microsoft Excel format.

**Inserted graphs**

Quattro Pro maps an inserted Microsoft Excel graph to the nearest Quattro Pro style. Quattro Pro also exports its inserted graphs, mapping them to the nearest match in Microsoft Excel.

**Draw layer objects**

Draw layer objects are imported into the draw layer in Quattro Pro. Draw layer objects include arrows, text boxes, buttons, line segments, rectangles, filled rectangles, rounded rectangles, and ellipses. Polygons and freehand drawings are not imported.

In situations where there is no comparable spreadsheet, AutoShape, shape, or drawing tool within Microsoft Excel or Quattro Pro, the shape is replaced with the best possible fit or is deleted. Text callout shapes will lose the text within them on import.

Draw layer objects in Quattro Pro are not exported to Microsoft Excel files.

**Maps**

Importing and exporting maps between Quattro Pro and Microsoft Excel is not supported. Map source data is retained, but the map chart is deleted.

## Corel Corporate Profile

Founded in 1985, Corel Corporation ([www.corel.com](http://www.corel.com)) is a leading technology company that offers software for home and small business users, creative professionals and enterprise customers. With its headquarters in Ottawa, Canada, Corel's common stock trades on the Nasdaq Stock Market under the symbol CORL and on the Toronto Stock Exchange under the symbol COR.

COREL CORPORATION

1600 Carling Avenue  
Ottawa, Ontario  
Canada K1Z 8R7

Web site: [www.corel.com](http://www.corel.com)

General telephone: 1-613-728-8200

Reader contact information: 1-800-77-COREL

Fax: 1-613-728-9790

Media inquiries: [media@corel.com](mailto:media@corel.com)

For more information about WordPerfect and Quattro Pro, visit [www.wordperfect.com](http://www.wordperfect.com)